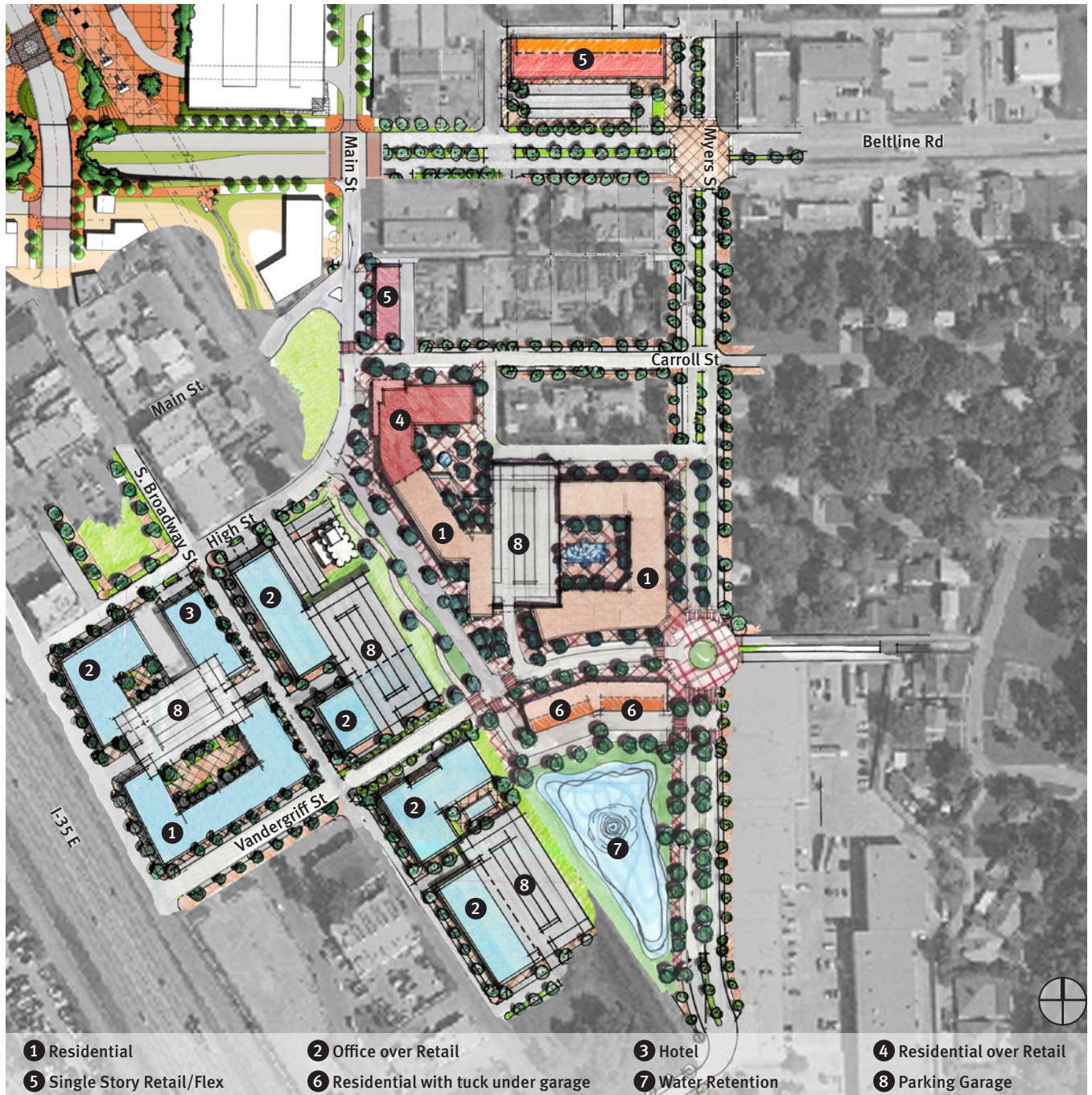


Carrollton TOD- Downtown Main Street Station
Master Planning • TOD • Mixed-Use
 Carrollton, TX



Trammell Crow Company
 295 units
 6.08 acres
 48.52 units/acre

We are part of the development team awarded by the City of Carrollton to develop around their three new/upcoming DART stations – the first redevelopment will happen around the Downtown/Main street station. The common vision shared by the Carrollton Renaissance Plan team involves strategic investment in a compact, transit-oriented development (TOD) environment, containing a mix of land uses, with a strong emphasis on walkable urbanity. The creation of a more vibrant urban milieu in the context of greatly enhanced transportation connectivity suggests that downtown Carrollton has the potential to regain and perhaps surpass its historical status as a hub of development and economic activity.