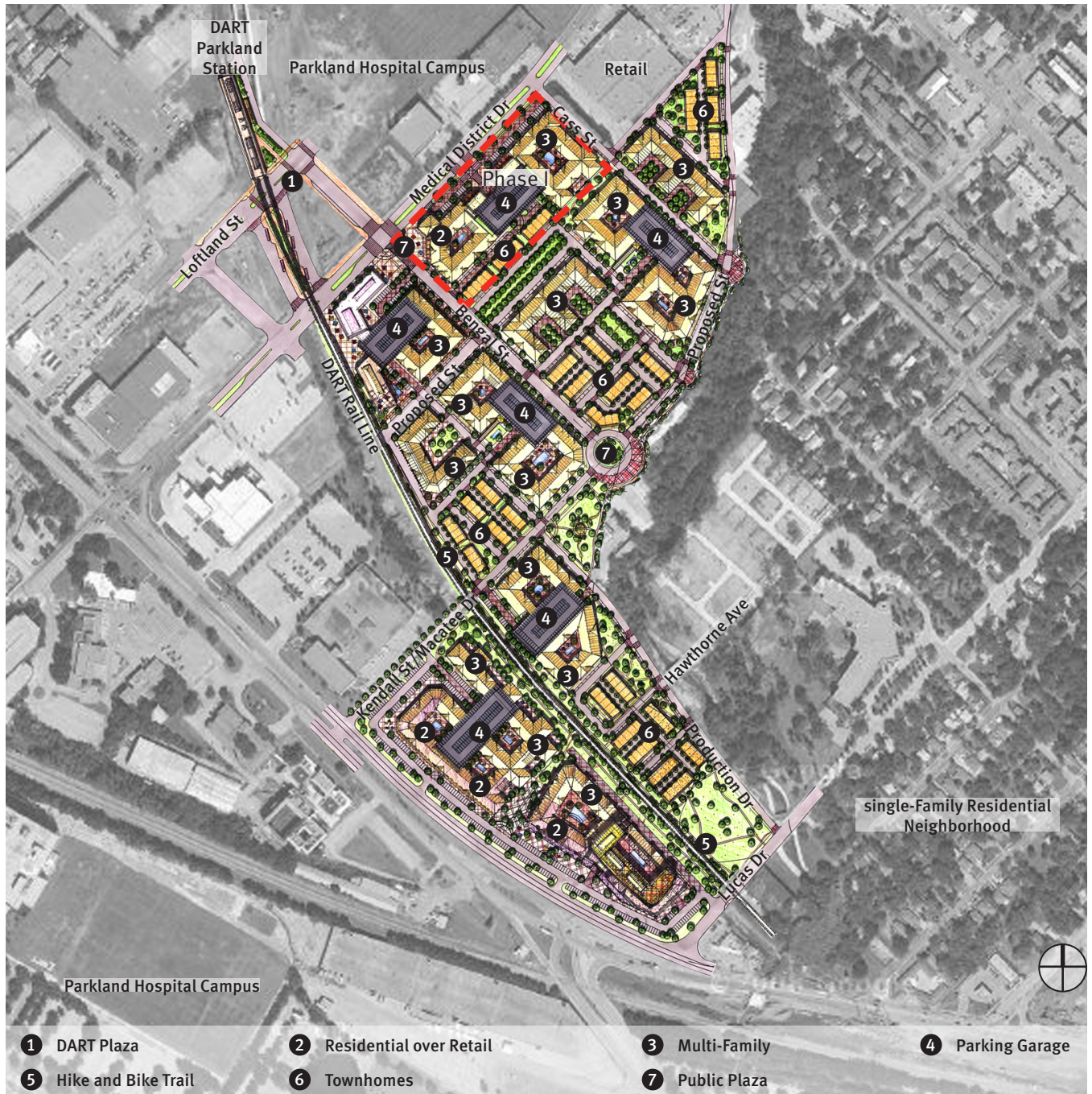


Cityville Southwestern Medical District Master Plan

Master Planning • TOD • Urban Infill

Dallas, Texas



*Inland American Communities
(formerly First Worthing Co.)*
4500 Units
139 Acres
32.37 units/acre
700,000 SF of office/retail

JHP prepared a master plan for Southwestern Medical District (SWMD) TIF district which was established by the City of Dallas. Situated within walking distance of the Southwestern Medical District, a 225+ acre area consisting of UT Southwestern Medical Center, Parkland Health and Hospital System, Children’s Medical Center, and the expansion for new a hospital and other medical facilities. The adjacent future DART Green line and SWMD Transit stop along with the Stemmons Avenue Redevelopment effort and surrounding residential neighborhoods primed for redevelopment make this TIF district ideally suited for urban redevelopment. The TIF program makes investing in urban areas more economically feasible by reimbursing developers for eligible expenses such as paving, streetscaping, infrastructure, public-use improvements, and utilities.

8340 Meadow Road
Suite 150
Dallas, Texas 75231-3766

Architecture / Urban Design
jhparch.com
214 363.5687

Please inquire to learn more. ↗